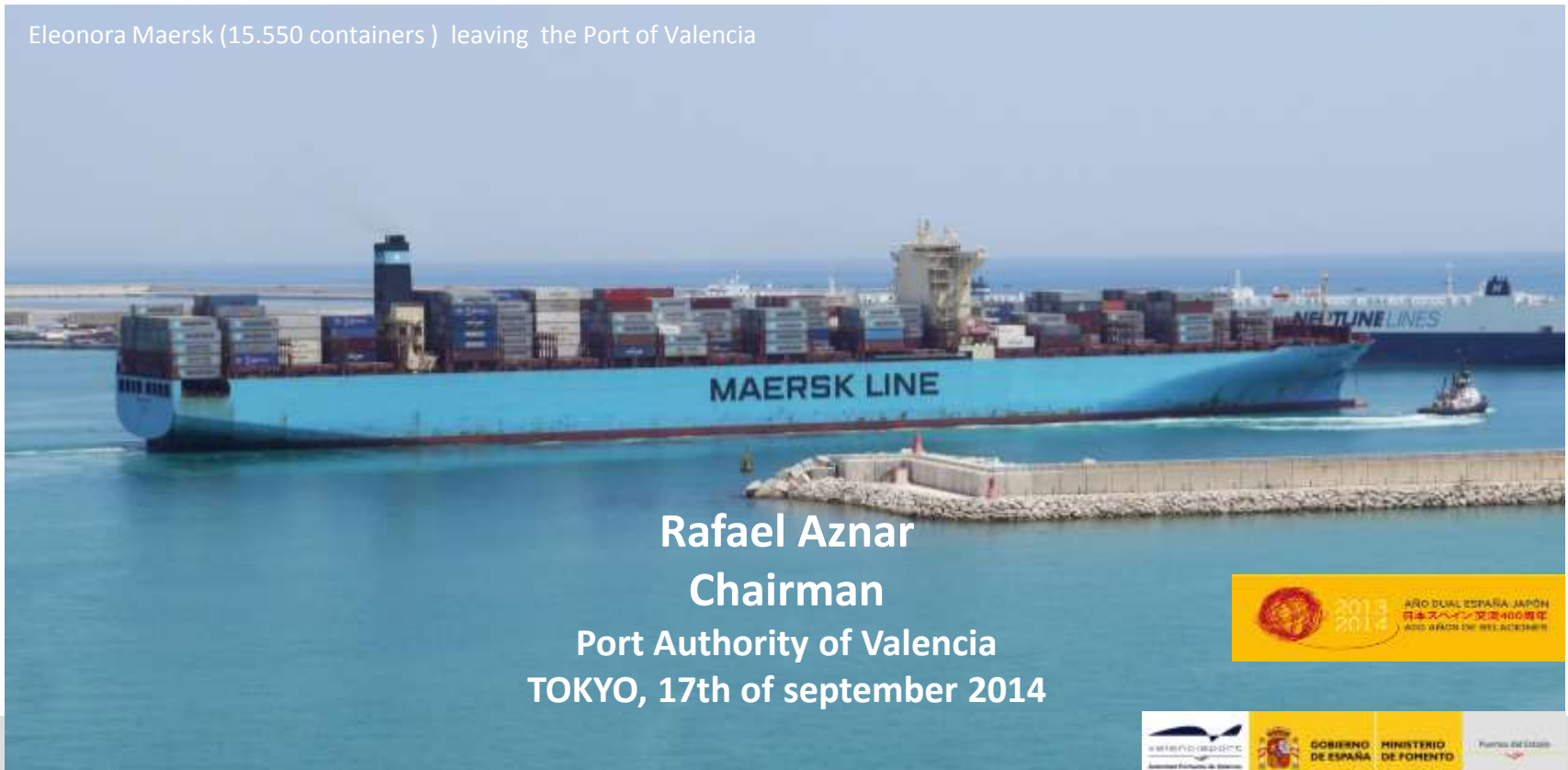


Port Authority of Valencia

Port of Valencia: Entrance to Europe Intermodal Transport and New Railway Corridors



Eleonora Maersk (15.550 containers) leaving the Port of Valencia



Rafael Aznar
Chairman

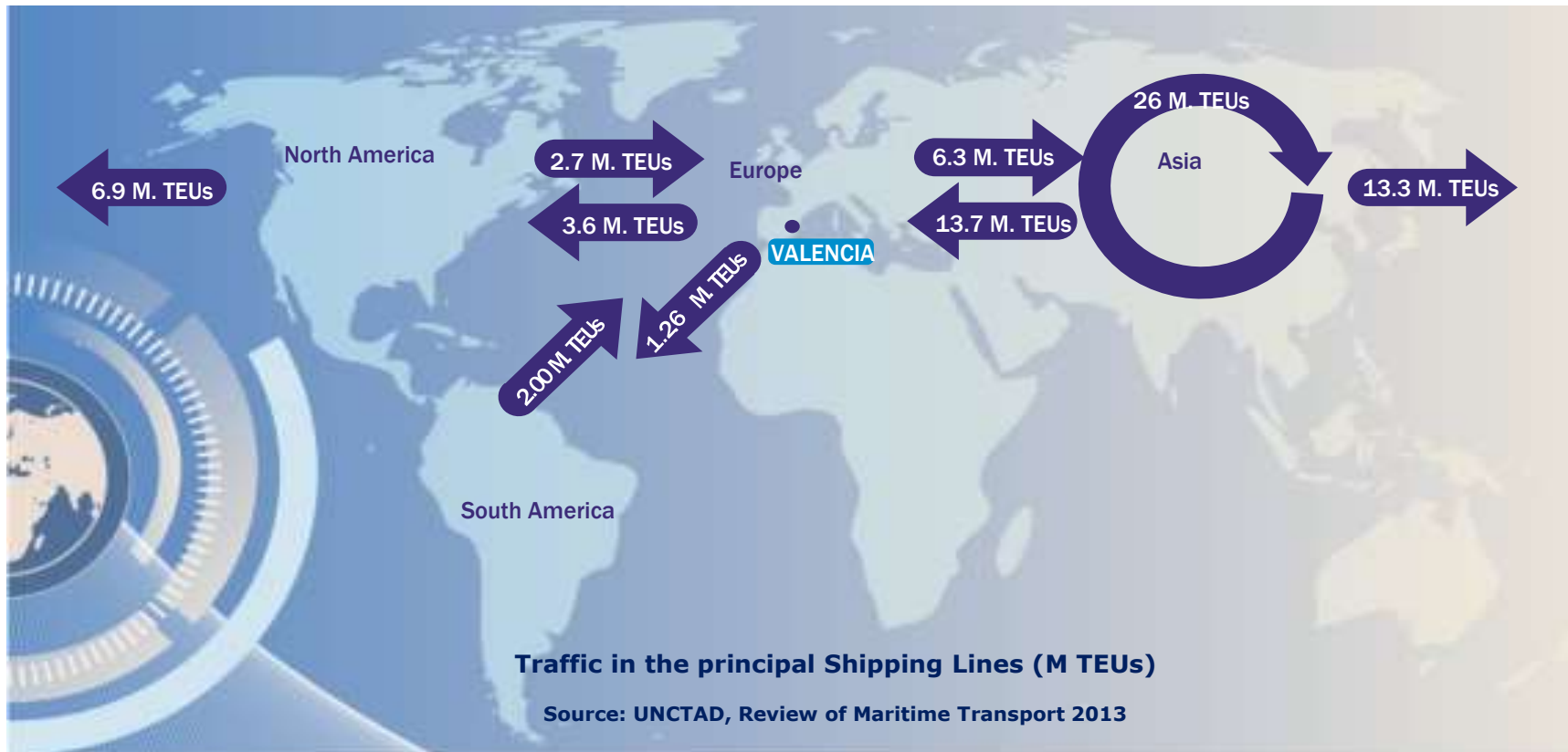
Port Authority of Valencia
TOKYO, 17th of september 2014



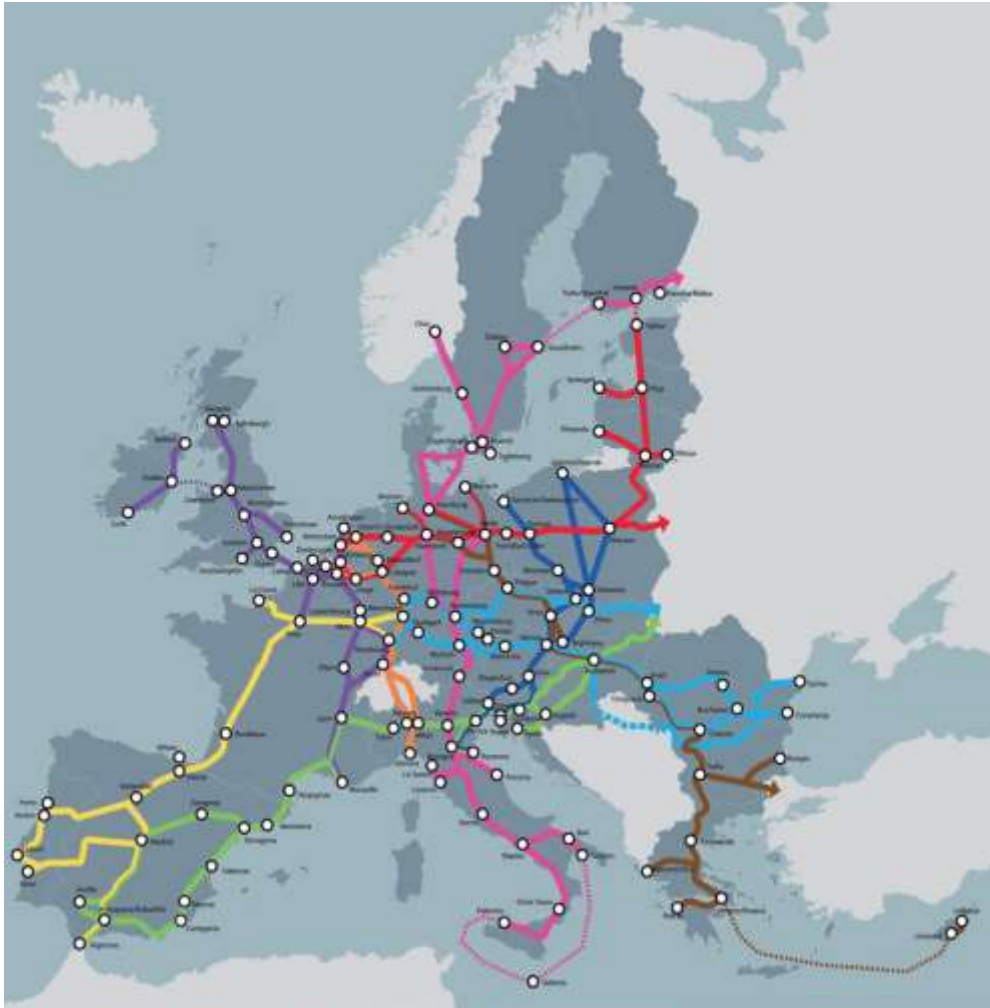
World economic context: transport flows



Most of the global container transport is operated in the east-west bounds. The ones who have Asia as origin or destination are those who are expected to grow the fastest.



The new European Ports Policy Review of the European Transport Network (TEN-T)



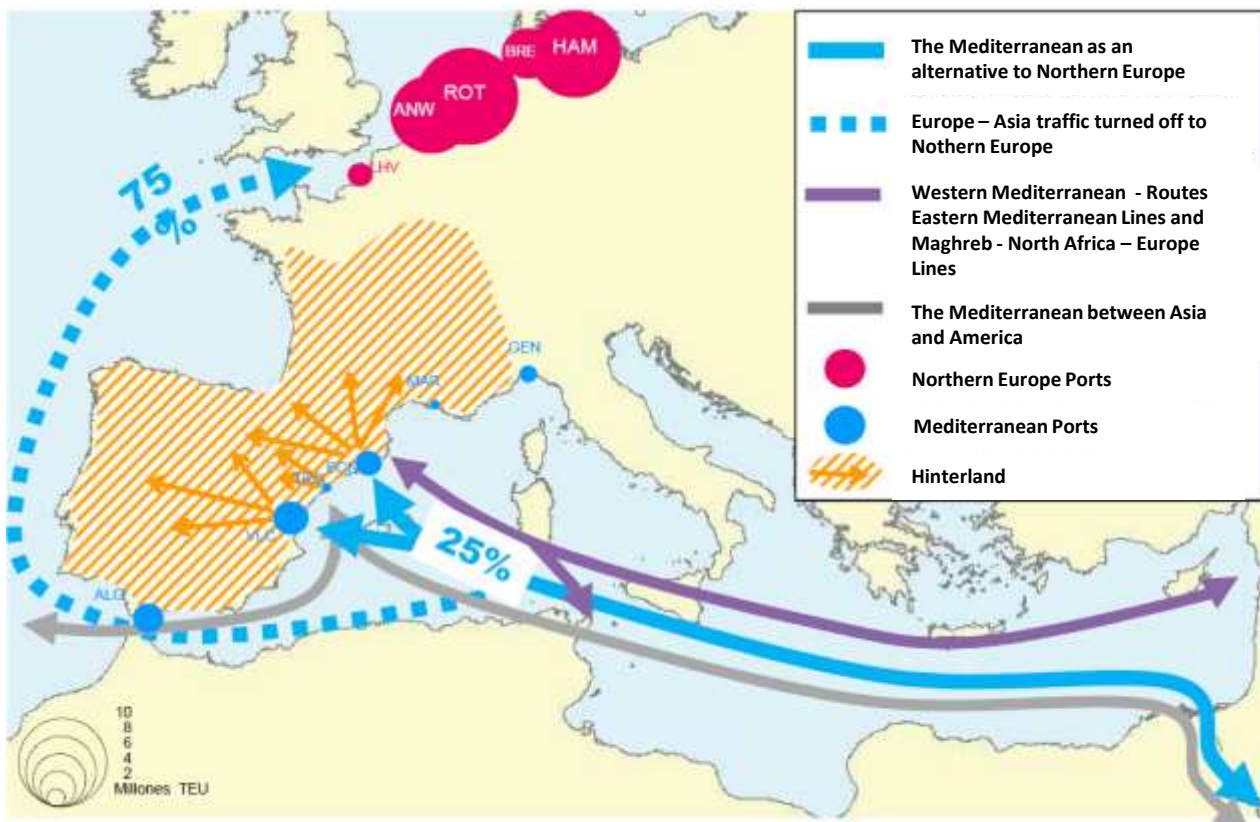
Central Role of
Maritime Ports



The new TEN-T has a
dual approach with a
basic network and a
global network

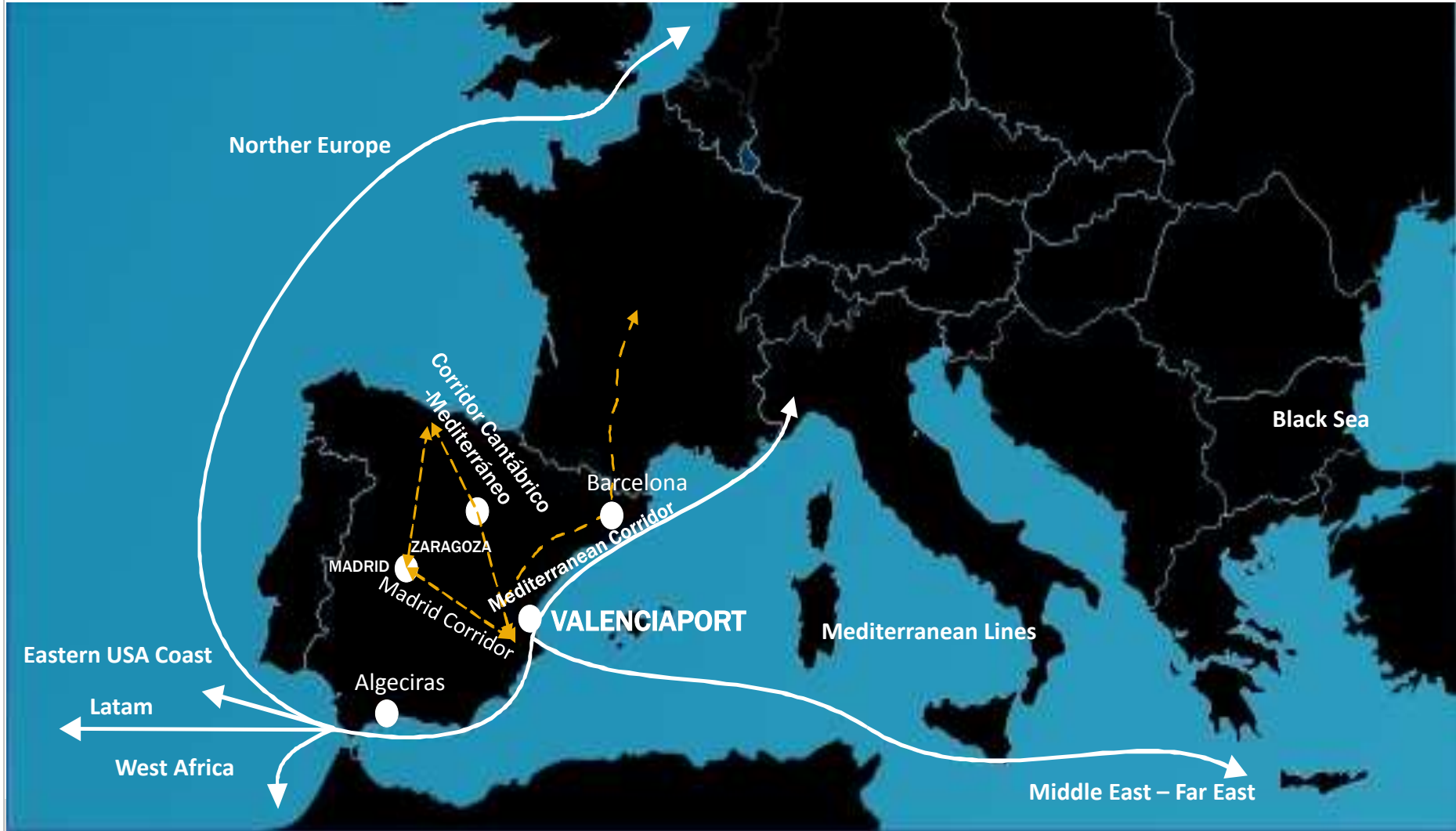
The importance of the Mediterranean in international trade

Advantages of the ports of the south facade:

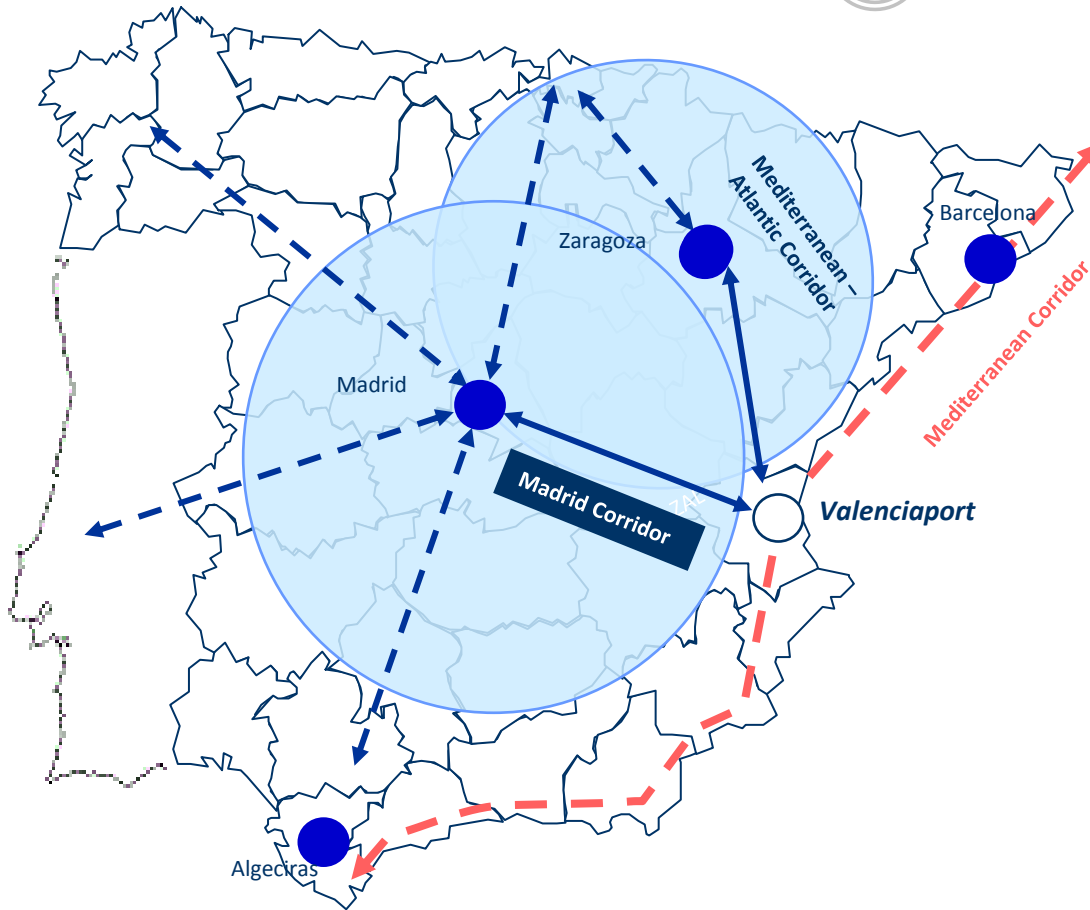


- ✓ 3/4 days less navigation
- ✓ Fuel savings
- ✓ Savings in the number of vessels
- ✓ Reduction of CO2 emissions
- ✓ Improved infrastructure of ports to operate the state-of-the-art container ships

Intermodality and Transport Corridors



Intermodality and Railway Corridors



- Train corridors:**
- Madrid – Center – Portugal
 - Mediterranean - Atlantic
 - **Mediterranean**



**52 weekly trains
with origin / destination
Valenciaport**

Valenciaport is perfectly connected to the State Road Highways and General State Railway Network

We are the Port of Madrid



Port of Valencia-Port of Madrid: a share of more than 60% of the containers in the Madrid area

Rail way share up to 25% in Valencia-Madrid corridor



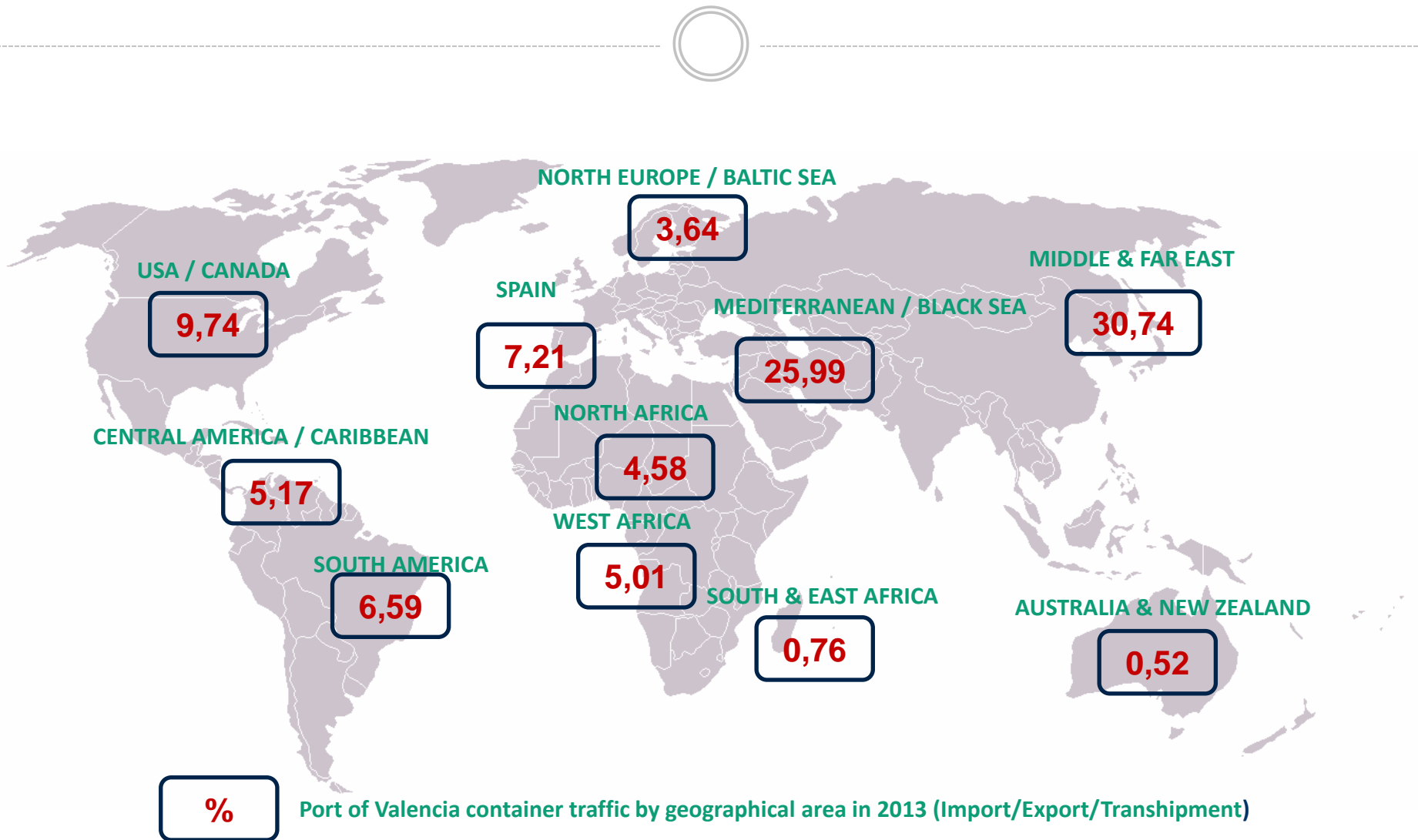
World Ports Ranking



Valenciaport is at N° 31 with 4,327,838 TEU's

Fuente: Diario del Puerto

THE STRONGEST COMMERCIAL CHANNEL FOR ALL WORLD REGIONS





The most important operators Valenciaport – Japan 2013



THE MOST IMPORTANT TERMINALS VALENCIA

- 1 Container NOATUM
- 2 Container MSC
- 3 Container TCV
- 4 Ro - Ro Dique del Este
- 5 Ro - Ro Muelle Costa
- 6 Liquid Bulk
(Petrol Products)
- 7 Liquid Bulk
(Asphalt, Oils, Molasses)
- 8 Solid Bulk
(Coal, Clinker)
- 9 Solid Bulk
(Cereals)
- 10 Solid Bulk
(Cement)
- 11 Passengers and Cruises
Terminal (Acciona)
- 12 Passengers and Cruises
Terminal (Balearia)
- 13 Future Cruises Terminal



Growth Model: VALENCIA NORTH EXTENSION

MUELLES DE CONTENEDORES



MUELLES DE CONTENEDORES		
	FASE I	FASE II
LONGITUD DE ATRAQUES	1.315 m.	1.330 m.
CALADO	18 m.	16 m.
SUPERFICIE DE DEPÓSITO	80 Ha.	72 Ha.
CAPACIDAD ACTUAL	4,9 millones TEU	
CAPACIDAD TRAS AMPLIACIÓN	10 millones TEU	
INVERSIÓN PÚBLICA	104,8 mill. €	85 mill. €
INVERSIÓN PRIVADA	318 mill. €	226,5 mill. €



THE MOST IMPORTANT TERMINALS SAGUNTO

- 1 Toyota Logistic Center
- 2 LNG Terminal
- 3 Multipurpose Terminal
- 4 Multipurpose Terminal
- 5 Multipurpose Terminal
- 6 Multipurpose Terminal
- 7 Iron and Steel Processing Centre
- 8 Car Terminal



TOWARDS 2020

- 5.6 M TEU's
- 90 M Ton

Valenciaport 2020: well defined Strategy

Strategy Focused

GREEN & GROWTH

- Market - oriented
- Services efficiency
- Logistic & intermodal integration
- Economic, social & environmental sustainability



SMART & RELIABLE PORT